

NORTH CAROLINA
SYMPHONY

Family Fun Concert!



TCHAIKOVSKY DISCOVERS AMERICA

SAT, JAN 4 | 1PM & 4PM

MEYMANDI CONCERT HALL, RALEIGH

YOUNG PEOPLE'S CONCERT
SERIES SPONSOR

WakeMed 
Children's

The North Carolina Symphony gratefully acknowledges financial support from Wake County, the City of Raleigh, and the State of North Carolina.



About the Performers

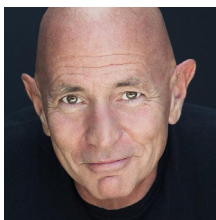


Sophie Sze-Ki Mok, *Assistant Conductor*
The Lucy Moore Ruffin Chair

In November 2024, Sophie Sze-Ki Mok began her tenure as Assistant Conductor of the North Carolina Symphony. She has served as the Assistant Conductor of the Asian Youth Orchestra for 2023 and 2024, where she assisted conductors Joseph Bastian and Jader Bignamini. Her recent engagements include serving as the cover conductor for five programs with the Baltimore Symphony Orchestra working with conductors including Marin Alsop, Jonathon Heyward, Thomas Wilkins, and Tan Dun. Previously, she was the Conducting Fellow of the Miami Symphony Orchestra as well as an Assistant Conductor of the Frost Symphony Orchestra at the University of Miami Frost School of Music.

Mok was selected to compete in the La Maestra Conducting Competition in 2024 and was one of several finalists to compete in Riccardo Muti's Italian Opera Academy in 2022. In 2019, she won second prize at the International Conductor's Competition held during the Deutsches Musikfest. For six years, she served as the conductor of the Hong Kong Youth Wind Philharmonia, mentoring young musicians from elementary school through college.

Born in Hong Kong, Mok began her musical journey as an oboist. She received her bachelor's degree in oboe performance from Hong Kong Baptist University and later furthered her studies at the University of Colorado at Boulder, where she earned a master's degree. As a conductor, she holds a master's degree in orchestral conducting from the College-Conservatory of Music (CCM), and an Artist Diploma in conducting from the University of Miami Frost School of Music under the tutelage of Gerard Schwarz.



Roger Anderson,
Peter Ilyich Tchaikovsky

Roger is an actor and musical theatre artist based in Chicago. He has been featured in films and commercials for United Airlines, Sony, Microsoft, IBM, Volvo, Ford Motor Company, Fidelity Investments, S.C. Johnson, Colgate, and the New York Stock Exchange. He has worked on musical theatre stages across the country with Patti LuPone, Audra MacDonald, David Hyde Pierce, Michael Cerveris, and Sean Hayes, as well with conductors including Zubin Mehta and Andre Previn.

His performances have included appearances at the White House, The John F. Kennedy Center for the Performing Arts, Walt Disney World, and the Ravinia Festival. Regional musical theatre credits include Juan Perón in *Evita*, Jacob/Potiphar in *Joseph and the Amazing Technicolor Dreamcoat*, Harold Hill in *The Music Man*, Barnum in *Barnum*, KoKo in *The Mikado*, Petruccio in *Kiss Me, Kate*, Georges in *La Cage aux Folles*, Sergeant of Police in *The Pirates of Penzance*, and Roger DeBris in *The Producers*. He currently sings with the Chicago-based vocal group Table For Five and, along with his career as an actor, is a practicing Speech/Language Pathologist.



Nicole Hren, *Jennie Petroff*

Nicole tours with Classical Kids in both *Tchaikovsky Discovers America* and *Vivaldi's Ring of Mystery*. Other credits include *Guys and Dolls*, *The Music Man*, *A Chorus Line*, *Beauty and the Beast*, and *Swing!* at the Marriot Theatre; *The Radio City Christmas Spectacular* in Atlanta, Orlando, and Nashville; *Seven Brides for Seven Brothers*, *Meet Me in St. Louis*, and *Hairspray* at The Muny in St. Louis; *Funny Girl*, *Thoroughly Modern Millie*, *A Christmas Carol*, *Curtains*, *Sweet Charity*, *Fiddler on the Roof*, *Kiss Me, Kate*, *Camelot*, *Superman*, and *Meet Me in St. Louis* at Drury Lane Theatre, *Joseph and the Amazing Technicolor Dreamcoat*, and *A Chorus Line* at the Paramount Theatre in Aurora, Chicago at Pheasant Run Dinner Theater, *Singin' in the Rain* at the Chicago Center for the Performing Arts, and *Association*, *The Musical* at the Arie Crown Theater in Chicago's McCormick Place.

Nicole performed for many years with Moraine Valley Theater for Young Audiences as an artist in residence in the following productions: *The Little Mermaid*, *The Velveteen Rabbit*, *Babes in Toyland*, *Cinderella*, *The Odyssey*, and *The Diary of Anne Frank*. She is the choreographer of *A Christmas Carol* at Drury Lane Theater and a proud member of Actors' Equity.

NORTH CAROLINA **SYMPHONY**

YOUNG PEOPLE'S CONCERT

TCHAIKOVSKY DISCOVERS AMERICA

SAT, JAN 4, 2025 | 1PM & 4PM

MEYMANDI CONCERT HALL, WOOLNER STAGE
MARTIN MARIETTA CENTER FOR THE PERFORMING ARTS, RALEIGH

North Carolina Symphony
Sophie Mok, *conductor*
Classical Kids Live!

The North Carolina Symphony presents
Tchaikovsky Discovers America by Classical Kids LIVE!

Featuring

Roger Anderson as Peter Ilyich Tchaikovsky
&
Nicole Hren as Jennie Petroff

Director and Producer
Paul Pement

Series Creator
Susan Hammond

Playwright & Music Editor
Douglas Cowling

Dramaturgy & Music Timing by
Paul Pement

The theatrical concert version of *Tchaikovsky Discovers America* is an adaptation of the best-selling and award-winning Classical Kids recording *Tchaikovsky Discovers America*, produced by Susan Hammond.

Classical Kids® is a trademark licensed exclusively to Pement Enterprises and produced by Classical Kids Music Education, NFP.

The North Carolina Symphony gratefully acknowledges the support of Young Peoples Concert Series Sponsor WakeMed Children's.

This concert is made possible in part by
The Drs. James and Mary Susan Fulghum Fund.



NAME _____

AGE _____



NORTH CAROLINA **SYMPHONY**
Tchaikovsky Discovers America

SAT, JAN 4, 2025 | 1PM & 4PM

YOUNG PEOPLE'S
CONCERT SERIES
SPONSOR

WakeMed 
Children's

*This concert is made possible in part by
The Drs. James and Mary Susan Fulghum Fund.*

The Musicians of the North Carolina Symphony

Carlos Miguel Prieto,
Music Director
*The Maxine and
Benjamin Swalin
Chair*

Grant Llewellyn,
Music Director Laureate

Sophie Sze-Ki Mok,
Assistant Conductor
The Lucy Moore Ruffin Chair

Violin I

To Be Filled, Concertmaster *The
Annabelle Lundy Fetterman Chair*

Jessica Hung,
Associate Concertmaster *The Assad
Meymandi and Family Chair*

Anna Black,
Assistant Concertmaster
The Anne Heartt Gregory Chair

Karen Strittmatter Galvin, Assistant
Concertmaster

Emily Rist Glover
The Jessie Wyatt Ethridge Chair

Paul Goldsberry
The Richard and Joy Cook Chair

Seula Lee
The Governor James B. Hunt, Jr. Chair

Joseph Meyer*

Maria Meyer
The Tom and Mary Mac Bradshaw Chair

Minjoo Moon*
The Harvey At-Large Chair

Pablo Sánchez Pazos
The Phyllis ("Pat") Conrad Wells Chair

Jessica Ryou
The James C. Byrd and Family Chair

Erin Zehngut
The J. Felix Arnold Chair

*The North Carolina Symphony
Foundation gratefully
acknowledges the generous gift
of the Lupot violin from Arnold
and Zena† Lerman.
†deceased*

Violin II

Jacqueline Saed Wolborsky,
Principal
The Nancy Finch Wallace Chair

Tiffany Kang,
Associate Principal
The Blanche Martin Shaw Chair

David Kilbride,
Assistant Principal

Qi Cao

Janet Gayer Hall

Chris Jusell

Oskar Ozolinch

Subin Shin

Jeanine Wynton

Viola

Samuel Gold, Principal
*The Florence Spinks and Charles
Jacob Cate and Alma Yondorf
and Sylvan Hirschberg Chair*

Kurt Tseng,
Associate Principal
The Betty Ellen Madry Chair

Brian Sherwood,
Assistant Principal

Petra Berényi

Paul Malcolm

Amy Mason
The J. Sidney Kirk Chair

Daniel Moore

Sandra Schwarcz
*The Samuel H. and Anne Latham
Johnson Chair*

Cello

Bonnie Thron, Principal
The June and Tom Roberg Chair

Elizabeth Beilman,
Associate Principal
*The Sarah Carlyle Herbert Dorroh
Chair*

Peng Li, Assistant Principal,
Anonymously Endowed

Yewon Ahn**
Anonymously Endowed

David Meyer
The Nell Hirschberg Chair

Marc Moskovitz*
*The William Charles Rankin
Chair*

Lisa Howard Shaughnessy
The Sara Wilson Hodgkins Chair

Samuel Sykes*

Nathaniel Yaffe
*The Secretary of Cultural
Resources Betty Ray McCain
Chair*

Double Bass

Leonid Finkelshteyn, Principal
*The Martha and Peyton
Woodson Chair*

Joshua DePoint,
Associate Principal
*The Dr. and Mrs. Preston H. Gada
Chair*

Craig Brown
*The Mark W. McClure Foundation
Chair*

Erik Dyke
*The Harlee H. and Pauline G.
Jobe Chair*

Bruce Ridge
*The John C. and Margaret P.
Parker Chair*

Flute

Megan Torti, Principal
*The Mr. and Mrs. George M.
Stephens Chair*

Mary E. Boone,
Assistant Principal
*The Dr. and Mrs. Shaler Stidham,
Jr. Chair*

Alexandra Stokes*
The Jack and Sing Boddie Chair

Piccolo

Alexandra Stokes*
The Jean Dunn Williams Chair

Oboe

Melanie Wilsden, Principal
The Hardison and Stoltze Chair

Joseph Peters,
Associate Principal,
The Lizette T. Dunham Chair

Rachel Ahn*
*The Clarence and Alice Aycock
Poe Chair*

English Horn

Joseph Peters
*The Bruce and Margaret King
Chair*

Clarinet

Samuel Almaguer, Principal
*The Mr. and Mrs. J. Christopher
Walker, II Chair*

Sammy Lesnick,
Assistant Principal
*The Kathryn Powell and Green
Flavie Cooper Chair*

Bassoon

Aaron Apaza, Principal
*The Mr. and Mrs. Fitzgerald S.
Hudson Chair*

Wenmin Zhang,
Assistant Principal,
The Beethoven Chair

French Horn

Rebekah Daley, Principal
The Mary T. McCurdy Chair

Kimberly Van Pelt,
Associate Principal
*The Paul R. Villard and Gabriel
Wolf Chair*

Gabriel Mairson
The James Marion Poyner Chair

Russell Rybicki
*The Roger Colson and
Bobbi Lyon Hackett Chair*

To Be Filled
*The Mary Susan Kirk Fulghum
Chair*

Trumpet

Paul Randall, Principal
The George Smedes Poyner Chair

Ben Hauser,
Associate Principal
*The Henry and Martha Zaytoun
and Family Chair*

Trombone

John Ilika, Principal
*The Thomas Warwick Steed, Jr.
Family Chair*

Steven Osborne*,
Assistant Principal
The Frances Armour Bryant Chair

Bass Trombone

Matthew Neff
Anonymously Endowed

Tuba

Seth Horner, Principal
*The Governor and Mrs. James G.
Martin, Jr. Chair*

Timpani

Colin Hartnett, Principal
*The Patricia R., Steven T. and
George F. Hackney III Chair*

Percussion

Richard Motylinski, Principal
*The Margery and Earl Johnson,
Jr. Chair*

Rajesh Prasad,
Assistant Principal
*The Abram and Frances Pascher
Kanof Chair*

Organ

To Be Filled
*The Albert and Susan Jenkins
and Family Organ Chair*

Library

Stephanie Wilson,
Principal Orchestra Librarian
*The Mary Colvert and Banks C.
Talley Chair*

Taylor Troyer,
Assistant Orchestra Librarian

*Acting position

**Leave of absence

*Named musician chairs
are made possible through
very meaningful gifts to the
Symphony's endowment. As
such, these donor families are
also members of the Lamar
Stringfield Society.*

*All string players rotate stands on
a periodic basis in each section
with the exception of titled
players: Principals, Associate
Principals, and Assistant
Principals.*

*The North Carolina Symphony
is a member of the League of
American Orchestras and the
International Conference of
Symphony and Opera Musicians.*

*The North Carolina Master
Chorale is the Resident Chorus of
the North Carolina Symphony.*

**Thank you to the generous individuals, businesses, foundations, and
community partners who support the North Carolina Symphony each year.**

The North Carolina Symphony gratefully
acknowledges financial support from
Wake County, the City of Raleigh,
and the State of North Carolina.



NORTH CAROLINA SYMPHONY

You can support over 150,000
North Carolina students this
year by donating to the Annual
Fund so they can experience *your*
Symphony's education programs!
Your contribution supports **artistic
excellence, statewide service, and
music education.**

*Plus, your gift counts towards the
2024/25 State Challenge Grant goal!*

Scan the QR code, visit
ncsymphony.org/donate,
or call 919.733.2750. **Thank you!**

