

NORTH CAROLINA SYMPHONY

The Music of the Rolling Stones

UNC Health Summerfest

Sat, Jun 29, 2024 | 8pm
KOKA BOOTH AMPHITHEATRE, CARY

North Carolina Symphony

Jason Seber, *conductor*

Justin Sargent, *vocalist*

Eldon Sully, *guitar*

Kevin Moore, *keyboard*

Danny Miranda, *bass*

Brian Petry, *drums*

The program will be announced from the stage.

There will be one 15-minute intermission.

PRESENTED BY 

SPONSORED BY  **forever first**

HOSTED BY 

PICNIC OF THE WEEK PARTNER 

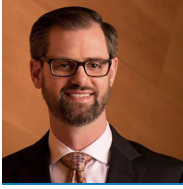
MEDIA PARTNER: WBBB 96.1

The North Carolina Symphony gratefully acknowledges financial support from Wake County, the City of Raleigh, and the State of North Carolina.



Thank you also to the generous individuals, businesses, foundations, and community partners who support the North Carolina Symphony through contributions each season.

About the Artists



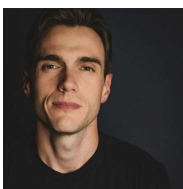
Jason Seber, *conductor*

This concert is the North Carolina Symphony debut for Jason Seber.

Jason Seber served as associate conductor of the Kansas City Symphony from 2016 to 2022. In this position he led the Symphony in over 300 performances. He also served as co-host for the Symphony's podcast, *Beethoven Walks into a Bar*. Prior to Kansas City, he was the education and outreach conductor at the Louisville Orchestra from 2013 to 2016 and music director of the Louisville Youth Orchestra from 2005 to 2016.

Seber has conducted American orchestras including the Charleston, Colorado, Houston, Nashville, San Diego, and Santa Fe symphonies; the National Symphony Orchestra and the Detroit, Duluth Superior, Indianapolis, Milwaukee, and St. Louis symphony orchestras; and the Buffalo Philharmonic Orchestra. He has performed with artists including Patti Austin, Mason Bates, Andrew Bird, Boyz II Men, Ashley Brown, Jinjoo Cho, Melissa Etheridge, Ben Folds, Renée Elise Goldsberry, Paul Jacobs, Wynonna Judd, Lyle Lovett, Natalie Merchant, Brian Stokes Mitchell, My Morning Jacket, Leslie Odom Jr., Aoife O'Donovan, Pink Martini, Stephen Schwartz, Doc Severinsen, Conrad Tao, Bobby Watson, and Joyce Yang. He has also led orchestras across the country on a tour with Lyle Lovett and His Large Band.

Seber has led the Honors Performance Series Orchestra in concert at Carnegie Hall, Sydney Opera House, and Royal Festival Hall in London. He is a frequent guest conductor of the National Repertory Orchestra each summer and he has served as the All-State Orchestra conductor for Georgia, Missouri, Pennsylvania, and Kansas.



Justin Sargent, *vocalist*

This concert is the North Carolina Symphony debut for Justin Sargent.

Justin Matthew Sargent is a singer and actor who has starred on Broadway as Peter Parker in *Spiderman: Turn Off the Dark* (music by Bono and The Edge) and as Drew in *Rock of Ages*, and was in the Original Broadway Cast of *Bonnie and Clyde*. In 2024, he starred in the musical *A Sign of the Times* at New World Stages in New York City.

Born in Murphysboro, Illinois, and raised in Florida, Sargent has been performing since high school. He has performed alongside music legends like John Legend, Alice Cooper, Sara Bareilles, Dee Snider, Kip Winger, and Graham Russell, and has been a guest singer with the band Air Supply.

Sargent has toured the country singing everything from Queen to Andrew Lloyd Webber. His television and film appearances include *Jesus Christ Superstar: Live* on NBC as well as *Law & Order: SVU*, *Mr. Robot*, *Delocated*, *Royal Pains*, and others.

The Musicians of the North Carolina Symphony

Carlos Miguel Prieto,
Music Director
*The Maxine and
Benjamin Swalin
Chair*

Grant Llewellyn,
Music Director Laureate

Michelle Di Russo,
Associate Conductor
The Lucy Moore Ruffin Chair

Violin I

Brian Reagin, Concertmaster
*The Annabelle Lundy Fetterman
Chair*

Jessica Hung,
Associate Concertmaster
*The Assad Meymandi and Family
Chair*

Anna Black,
Assistant Concertmaster
The Anne Heartt Gregory Chair

Karen Strittmatter Galvin,
Assistant Concertmaster

Carol Chung*

Emily Rist Glover
The Jessie Wyatt Ethridge Chair

Paul Goldsberry
The Richard and Joy Cook Chair

Maria Meyer
*The Tom and Mary Mac
Bradshaw Chair*

Pablo Sánchez Pazos
*The Phyllis ("Pat") Conrad Wells
Chair*

Jessica Ryou
*The James C. Byrd and Family
Chair*

Erin Zehngut
The J. Felix Arnold Chair

To Be Filled
The Harvey At-Large Chair

To Be Filled
*The Governor James B. Hunt, Jr.
Chair*

Violin II

Jacqueline Saed Wolborsky,
Principal
The Nancy Finch Wallace Chair

Tiffany Kang,
Associate Principal
The Blanche Martin Shaw Chair

David Kilbride, Assistant
Principal

Qi Cao

Janet Gayer Hall

Chris Jusell*

Oskar Ozolinch

Jeanine Wynton

Viola

Samuel Gold, Principal
*The Florence Spinks and Charles
Jacob Cate and Alma Yondorf
and Sylvan Hirschberg Chair*

Kurt Tseng,
Associate Principal
The Betty Ellen Madry Chair

Brian Sherwood,
Assistant Principal

Petra Berényi

Paul Malcolm

Amy Mason
The J. Sidney Kirk Chair

Daniel Moore

Sandra Schwarcz
*The Samuel H. and Anne Latham
Johnson Chair*

Cello

Bonnie Thron, Principal
The June and Tom Roberg Chair

Elizabeth Beilman,
Associate Principal
*The Sarah Carlyle Herbert Dorroh
Chair*

Peng Li, Assistant Principal,
Anonymously Endowed

Yewon Ahn
Anonymously Endowed

David Meyer
The Nell Hirschberg Chair

Marc Moskowitz*
*The William Charles Rankin
Chair*

Lisa Howard Shaughnessy
The Sara Wilson Hodgkins Chair

Nathaniel Yaffe
*The Secretary of Cultural
Resources Betty Ray McCain
Chair*

Double Bass

Leonid Finkelshteyn, Principal
*The Martha and Peyton
Woodson Chair*

Bruce Ridge*,
Associate Principal
*The John C. and Margaret P.
Parker Chair*

Craig Brown
*The Mark W. McClure Foundation
Chair*

Erik Dyke
*The Harlee H. and Pauline G.
Jobe Chair*

John Spuller*
*The Dr. and Mrs. Preston H. Gada
Chair*

Flute

To Be Filled, Principal
*The Mr. and Mrs. George M.
Stephens Chair*

Mary E. Boone,
Assistant Principal
*The Dr. and Mrs. Shaler Stidham,
Jr. Chair*

Vaynu Kadiyali*
The Jack and Sing Boddie Chair

Piccolo

Vaynu Kadiyali*
The Jean Dunn Williams Chair

Oboe

Melanie Wilsden, Principal
The Hardison and Stoltze Chair

Joseph Peters,
Associate Principal,
The Lizette T. Dunham Chair

Rachel Ahn*
*The Clarence and Alice Aycock
Poe Chair*

English Horn

Joseph Peters
*The Bruce and Margaret King
Chair*

Clarinet

Samuel Almaguer, Principal
*The Mr. and Mrs. J. Christopher
Walker, II Chair*

Sammy Lesnick,
Assistant Principal
*The Kathryn Powell and Green
Flavie Cooper Chair*

Bassoon

Aaron Apaza, Principal
*The Mr. and Mrs. Fitzgerald S.
Hudson Chair*

Wenmin Zhang,
Assistant Principal,
The Beethoven Chair

French Horn

Rebekah Daley, Principal
The Mary T. McCurdy Chair

Kimberly Van Pelt,
Associate Principal
*The Paul R. Villard and Gabriel
Wolf Chair*

Corbin Castro*
*The Roger Colson and Bobbi
Lyon Hackett Chair*

Gabriel Mairson*
The James Marion Poyner Chair

To Be Filled
*The Mary Susan Kirk Fulghum
Chair*

Trumpet

Paul Randall, Principal
The George Smedes Poyner Chair

Clinton McLendon,
Associate Principal
*The Henry and Martha Zaytoun
and Family Chair*

Trombone

John Ilika, Principal
*The Thomas Warwick Steed, Jr.
Family Chair*

Steven Osborne*, Assistant
Principal

Jonathan Randazzo**,
Assistant Principal
The Frances Armour Bryant Chair

Bass Trombone

Matthew Neff
Anonymously Endowed

Tuba

Seth Horner, Principal
*The Governor and Mrs. James G.
Martin, Jr. Chair*

Harp

Anita Burroughs-Price
Vonda Darr

Timpani

Colin Hartnett, Principal
*The Patricia R., Steven T. and
George F. Hackney III Chair*

Percussion

Richard Motylinski, Principal
*The Margery and Earl Johnson,
Jr. Chair*

Rajesh Prasad,
Assistant Principal
*The Abram and Frances Pascher
Kanof Chair*

Organ

To Be Filled
*The Albert and Susan Jenkins
and Family Organ Chair*

Library

Stephanie Wilson, Principal
Orchestra Librarian
*The Mary Colvert and Banks C.
Talley Chair*

Taylor Troyer,
Assistant Orchestra Librarian

*Acting position

**Leave of absence

**Named musician chairs
are made possible through
very meaningful gifts to the
Symphony's endowment. As
such, these donor families are
also members of the Lamar
Stringfield Society.**

*All string players rotate stands on
a periodic basis in each section
with the exception of titled
players: Principals, Associate
Principals, and Assistant
Principals.*

*The North Carolina Symphony
is a member of the League of
American Orchestras and the
International Conference of
Symphony and Opera Musicians.*

*The North Carolina Master
Chorale is the Resident Chorus of
the North Carolina Symphony.*

*The North Carolina Symphony
Foundation gratefully
acknowledges the generous
gift of the Lupot violin from
Arnold and Zena† Lerman.*

†deceased

NORTH CAROLINA SYMPHONY

Support artistic excellence, statewide service, and music education with a gift to the Annual Fund. Every gift makes a difference and counts toward the 2023/24 State Challenge Grant.

Visit ncsymphony.org/donate or call 919.733.2750

NORTH CAROLINA
SYMPHONY



UNC HEALTH PRESENTS

SUMMERFEST

CARY'S KOKA BOOTH AMPHITHEATRE

Pack your picnic and bring your friends and family for memorable, musical evenings at Cary's Booth Amphitheatre!

OPENING NIGHT

Tchaikovsky Spectacular

SAT, MAY 25, 2024 | 8PM

Salute to John Williams

FRI, MAY 31, 2024 | 8PM

Light Classics

FRI, JUN 7, 2024 | 8PM

Concert Sponsor: William Peace University

Steep Canyon Rangers

SAT, JUN 8, 2024 | 8PM

Classical Favorites

SAT, JUN 15, 2024 | 8PM

Concert Sponsor: CEI - The Digital Office

Swan Lake

FRI, JUN 21, 2024 | 8PM

Cirque Under the Stars

SAT, JUN 22, 2024 | 8PM

Concert Sponsor: Galloway Ridge at Ferrington

The Music of the

Rolling Stones

SAT, JUN 29, 2024 | 8PM

Songs of the '70s

SAT, JUL 6, 2024 | 8PM

Concert Sponsor: Raleigh Windows and Siding

The Catalinas

SAT, JUL 13, 2024 | 8PM

The Symphony will not be performing at this concert.

Save with Lawn
Flex Passes starting
at \$26 per ticket!

Plus, kids 12 and
under are always
admitted **FREE**
on the lawn!

Save big!



PRESENTED BY



SPONSORED BY



HOSTED BY



PICNIC OF THE WEEK
PARTNER

