



# NORTH CAROLINA SYMPHONY

## CLASSICAL FAVORITES CELEBRATING AMERICA 250

THU, APR 16, 2026 | 7:30PM

JOHN W. BARDO FINE & PERFORMING ARTS CENTER, CULLOWHEE

North Carolina Symphony

Sophie Mok, conductor

Katie Muhlenkamp, narrator



*As our nation approaches its 250th anniversary, the North Carolina Symphony joins in marking the occasion by reflecting, through music, on our nation's heroic spirit, ingenuity, hope and resilience.*

*As our state's orchestra, the North Carolina Symphony honors America 250 with a series of concerts in communities small and large, from the mountains to the sea. The concerts feature musical themes that have defined and reflected the American spirit since long before the adoption of the Declaration of Independence on July 4, 1776.*

### PROGRAM

**John Stafford Smith / Arr. Walter Damrosch  
and John Philip Sousa**

"The Star-Spangled Banner"

**Various composers / Arr. Lee Norris**

"Here Comes the Bands"

**Leonard Bernstein / Arr. Jack Mason**

*West Side Story* Selections for Orchestra

**John Philip Sousa**

"The Stars and Stripes Forever"

### INTERMISSION

**John Williams**

"Liberty Fanfare"

**Various composers / Arr. Jeff Tyzik**

"Fantasy on American Themes"

**George Gershwin**

"Lullaby" for Strings

**Various composers / Arr. Robert W. Lowden**

"Armed Forces Salute"

**Traditional / Arr. Peter Boier**

"Rolling River (Sketches on Shenandoah)"

**Aaron Copland**

"Buckaroo Holiday" from *Rodeo*

**John Williams**

"Superman March"

The North Carolina Symphony's Western Residency is a multi-county initiative that brings free concerts, education programs, and musician-led workshops to communities across Western North Carolina, serving students from preschool through high school and audiences of all ages.

The Western Residency is presented in partnership with the State of North Carolina and the N.C. Department of Natural and Cultural Resources.

# The Musicians of the North Carolina Symphony

---

Carlos Miguel Prieto,  
Music Director  
*The Maxine and Benjamin  
Swalin Chair*

Grant Llewellyn,  
Music Director Laureate

Sophie Sze-Ki Mok,  
Assistant Conductor  
*The Lucy Moore Ruffin Chair*

## Violin I

Justin Bruns, Concertmaster  
*The Annabelle Lundy Fetterman  
Chair*

Anna Black\*,  
Associate Concertmaster  
*The Assad Meymandi and Family  
Chair*

Karen Strittmatter Galvin,  
Assistant Concertmaster

Rotating,  
Assistant Concertmaster  
*The Anne Heartt Gregory Chair*

Emily Rist Glover  
*The Jessie Wyatt Ethridge Chair*

Paul Goldsberry  
*The Richard and Joy Cook Chair*

Seula Lee  
*The Governor James B. Hunt, Jr.  
Chair*

Joseph Meyer\*

Maria Meyer  
*The Tom and Mary Mac Bradshaw  
Chair*

K. Lee Morris  
*The Harvey At-Large Chair*

Esther Roestan

Jessica Ryou  
The James C. Byrd and Family Chair

Pablo Sánchez Pazos  
*The Phyllis ("Pat") Conrad Wells Chair*

Erin Zehngut  
*The J. Felix Arnold Chair*

## Violin II

Jacqueline Saed Wolborsky,  
Principal  
*The Nancy Finch Wallace Chair*

Tiffany Kang, Associate Principal  
*The Blanche Martin Shaw Chair*

David Kilbride, Assistant Principal

Qi Cao

Janet Gayer Hall

Chris Jusell

Oskar Ozolinch

Subin Shin

Jeanine Wynton

## Viola

Samuel Gold, Principal  
*The Florence Spinks and Charles  
Jacob Cate and Alma Yondorf and  
Sylvan Hirschberg Chair*

Kurt Tseng, Associate Principal  
*The Betty Ellen Madry Chair*

Brian Sherwood, Assistant Principal

Petra Berényi

Amy Mason  
*The J. Sidney Kirk Chair*

Daniel Moore

Sandra Schwarcz  
*The Samuel H. and Anne Latham  
Johnson Chair*

To Be Filled

## Cello

Bonnie Thron, Principal  
*The June and Tom Roberg Chair*

Elizabeth Beilman,  
Associate Principal  
*The Sarah Carlyle Herbert Dorroh  
Chair*

Peng Li, Assistant Principal  
*Anonymously Endowed*

Yewon Ahn

*Anonymously Endowed*

Emma Cary  
*The Sara Wilson Hodgkins Chair*

David Meyer  
*The Nell Hirschberg Chair*

Marc Moskovitz\*  
*The William Charles Rankin Chair*

Nathaniel Yaffe  
*The Secretary of Cultural Resources  
Betty Ray McCain Chair*

## Double Bass

Leonid Finkelshteyn, Principal  
*The Martha and Peyton Woodson  
Chair*

Joshua DePoint, Associate Principal  
*The Dr. and Mrs. Preston H. Gada  
Chair*

Jakob Gerritsen\*

Omar Haffar  
*The Harlee H. and Pauline G. Jobe  
Chair*

Bruce Ridge  
*The John C. and Margaret P. Parker  
Chair*

## Flute

Megan Torti, Principal  
*The Mr. and Mrs. George M. Stephens  
Chair*

Mary E. Boone, Assistant Principal  
*The Dr. and Mrs. Shaler Stidham, Jr.  
Chair*

Vaynu Kadiyali  
*The Jack and Sing Boddie Chair*

## Piccolo

Vaynu Kadiyali

## Oboe

Melanie Wilsden, Principal  
*The Hardison and Stoltze Chair*

Joseph Peters, Associate Principal  
*The Lizette T. Dunham Chair*

Hoon Chang  
*The Clarence and Alice Aycock Poe Chair*

## English Horn

Joseph Peters  
*The Bruce and Margaret King Chair*

## Clarinet

Samuel Almaguer, Principal  
*The Mr. and Mrs. J. Christopher Walker, II Chair*

Sammy Lesnick, Assistant Principal  
*The Kathryn Powell and Green Flavie Cooper Chair*

## Bassoon

Aaron Apaza, Principal  
*The Mr. and Mrs. Fitzgerald S. Hudson Chair*

Wenmin Zhang, Assistant Principal,  
*The Beethoven Chair*

## French Horn

Rebekah Daley, Principal  
*The Mary T. McCurdy Chair*

Kimberly Van Pelt, Associate Principal  
*The Paul R. Villard and Gabriel Wolf Chair*

Gabriel Mairson  
*The James Marion Poyner Chair*

Russell Rybicki  
*The Roger Colson and Bobbi Lyon Hackett Chair*

To Be Filled  
*The Mary Susan Kirk Fulghum Chair*

## Trumpet

Paul Randall, Principal  
*The George Smedes Poyner Chair*

Benjamin Hauser, Associate Principal  
*The Henry and Martha Zaytoun and Family Chair*

## Trombone

Devin Drinan, Principal  
*The Thomas Warwick Steed, Jr. Family Chair*

John Ilika, Assistant Principal  
*The Frances Armour Bryant Chair*

## Bass Trombone

Matthew Neff  
*Anonymously Endowed*

## Tuba

Seth Horner, Principal  
*The Governor and Mrs. James G. Martin, Jr. Chair*

## Timpani

Colin Hartnett, Principal  
*The Patricia R., Steven T. and George F. Hackney III Chair*

## Percussion

Richard Motylinski, Principal  
*The Margery and Earl Johnson, Jr. Chair*

Rajesh Prasad, Assistant Principal  
*The Abram and Frances Pascher Kanof Chair*

## Organ

To Be Filled  
*The Albert and Susan Jenkins and Family Organ Chair*

## Library

Stephanie Wilson, Principal Orchestra Librarian  
*The Mary Colvert and Banks C. Talley Chair*

Taylor Troyer, Assistant Orchestra Librarian

*\*Acting position*

*Named musician chairs are made possible through very meaningful gifts to the Symphony's endowment. As such, these donor families are also members of the Lamar Stringfield Society.*

*All string players rotate stands on a periodic basis in each section with the exception of titled players: Principals, Associate Principals, and Assistant Principals.*

*The North Carolina Symphony is a member of the League of American Orchestras and the International Conference of Symphony and Opera Musicians.*

*The North Carolina Master Chorale is the Resident Chorus of the North Carolina Symphony.*

*The North Carolina Symphony Foundation gratefully acknowledges the generous gift of the Lupot violin from Arnold and Zena† Lerman.*  
*†deceased*

## NORTH CAROLINA SYMPHONY

You can support over 150,000 North Carolina students this year by donating to the Annual Fund so they can experience your Symphony's education programs! Your contribution supports **artistic excellence, statewide service, and music education.**

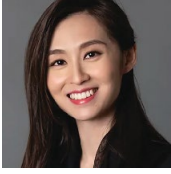
*Plus, your gift counts towards the 2025/26 State Challenge Grant goal!*

*Scan the QR code, visit [ncsymphony.org/donate](https://ncsymphony.org/donate), or call 919.733.2750. Thank you!*



## About the Artists

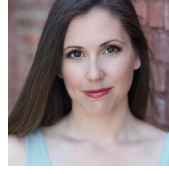
---



**Sophie Mok, Assistant Conductor**  
*The Lucy Moore Ruffin Chair*

In 2024, Sophie Sze-Ki Mok began her tenure as Assistant Conductor of the North Carolina Symphony. Since 2023, she has also served as Assistant Conductor of the Asian Youth Orchestra, where she has worked alongside Joseph Bastian and Jader Bignamini. She has assisted esteemed conductors including Marin Alsop, Jonathon Heyward, Thomas Wilkins, and Tan Dun.

Born in Hong Kong, Mok began her musical journey as an oboist. She received her bachelor's degree in oboe performance from Hong Kong Baptist University and later furthered her studies at the University of Colorado at Boulder, where she earned a master's degree. As a conductor, she holds a master's degree in orchestral conducting from the College-Conservatory of Music (CCM), and an Artist Diploma in conducting from the University of Miami Frost School of Music under the tutelage of Gerard Schwarz.



**Katie Muhlenkamp, narrator**

*These concerts are the North Carolina Symphony debut for Katie Muhlenkamp.*

Katie Muhlenkamp is a singer, actor, and voice teacher from North Carolina who devotes equal time to musical theatre, classical and sacred music, and plays. She has appeared with companies including Piedmont Opera, PBS NC (Longleaf Film Festival selection), Triad Stage, NC Black Repertory Company, Temple Theatre, and RhinoLeap, as well as at the Piccolo Spoleto Festival and with numerous orchestras across the state.

Muhlenkamp most enjoys singing golden age musical theatre roles such as Mary Poppins, Maria in *The Sound of Music*, and Julie Jordan in *Carousel*. She studied voice at Elon University and is pursuing a master's degree in Vocal Pedagogy at Essex University. She also teaches on the voice faculty of the UNC School of the Arts Community Music School. She holds a law degree from Wake Forest University and practiced law for 10 years before shifting full-time to music and her almost two-year-old daughter, Clara.



**David Dowd**  
*President, Bank of America Asheville*

"Bank of America is proud to sponsor the North Carolina Symphony's Patriotic Pops concerts during this milestone 250th anniversary year. Moments like these bring people together, celebrate our shared history, and reflect the cultural vibrancy that makes North Carolina, including Western North Carolina, such a special place to call home."

---

PATRIOTIC POPS  
PRESENTING SPONSOR



CELEBRATING AMERICA 250  
SPONSOR



MADE POSSIBLE THROUGH  
A PARTNERSHIP WITH



The North Carolina Symphony gratefully acknowledges financial support from the State of North Carolina, the Honorable Josh Stein, Governor.

***Thank you also to the generous individuals, businesses, foundations and community partners who support the North Carolina Symphony through contributions each season.***