

# NORTH CAROLINA **SYMPHONY**

## Video Games Live: BONUS ROUND

**SAT, SEP 13, 2025 | 7:30PM**

MEYMANDI CONCERT HALL, RALEIGH

**North Carolina Symphony**  
**Emmanuel Fratianni**, *conductor*  
**Tommy Tallarico**, *creator/producer/host*  
**North Carolina State University Choirs**  
Dr. Nathan Leaf, *choir director*

*Selections will be announced from the stage.*

*There will be a 15-minute intermission.*

## About the Artists

---



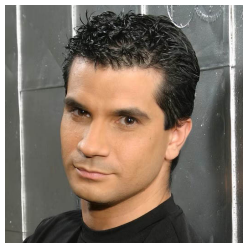
Emmanuel Fratianni, *conductor*

*Emmanuel Fratianni most recently appeared with the North Carolina Symphony for a Video Games Live concert in 2019.*

Emmanuel Fratianni has conducted over 80 worldwide ensembles to date, including major ensembles such as the San Francisco Symphony, Boston Pops, Detroit, Houston, and Baltimore symphony orchestras, the Royal Scottish National Orchestra, the Spanish and Czech National Symphony Orchestras, and the National Symphony Orchestra at The John F. Kennedy Center for the Performing Arts. He recently completed his 15th year as principal conductor of Video Games Live and is principal conductor of the Santa Barbara Chamber Players.

Born and raised in a large and lively Italian family on the shores of Lake Geneva in Switzerland, Fratianni began his classical music studies at the age of 7 and began performing publicly with his quartet at age 14. His extensive background as both a classical and jazz musician and a composer affords him as much ease leading a 120-piece orchestra as a jazz trio.

Emmanuel Fratianni is an Italian and US citizen, fluent in French, English and Italian. He lives with his family in Santa Barbara, California.



### Tommy Tallarico, *creator/producer/host*

*Tommy Tallarico has brought previous versions of Video Games Live to the North Carolina Symphony, most recently in 2019.*

Tommy Tallarico is a veritable video game industry icon. As one of the most successful video game composers in history, he has helped revolutionize the gaming world, creating unique audio landscapes that enhance the video gaming experience. He is considered the person most instrumental in changing the game industry from bleeps & bleeps to real music now appreciated worldwide by billions of fans.

As a well-recognized on-air television personality, live performer, show producer, creative director, game console CEO/President, sound designer and composer, Tallarico brings his in-depth knowledge, years of experience, and love of cutting edge multimedia and pop culture to the masses. He has worked in the gaming industry as a designer, product manager, producer, writer, hardware executive, games tester and heads of both music and video departments. He produced, co-created, wrote and co-hosted three internationally award-winning syndicated and network television shows as well as creating, producing and hosting the continuing worldwide touring sensation Video Games Live since 2002. Since 2010 he has become a highly sought after live show creative director/producer.

In 2002, Tallarico created the critically acclaimed Video Games Live, an immersive concert experience celebrating video games. Video Games Live features music from the greatest video games performed by top orchestras and choirs around the world combined with synchronized video footage, lasers, lights, special effects, interactivity and live action to create an explosive and unique one-of-a-kind entertainment experience.

Tallarico was inducted into the International Video Game Hall of Fame in 2021 for his many years of outstanding achievements in the video game industry. He is also internationally known in the backgammon community and in 2024 he won the Backgammon World Championship (Division II) in Monte Carlo, Monaco.



## North Carolina State University Choirs

Dr. Nathan Leaf, choir director

*The combined ensembles of the NC State Choirs perform with the North Carolina Symphony for the first time at this concert.*

The North Carolina State University Choirs offer a community of singers for students who wish to lift their voices in harmony with others. Directed by Dr. Nathan Leaf, the NC State Choirs consist of three ensembles.

The **State Chorale** is the premier choral ensemble at NC State. This 50-voice choir is dedicated to upholding and advancing the art of choral music in the collegiate tradition through the performance of the finest choral literature of all eras. The Chorale has a rich tradition and performs regularly throughout the year, including tours every 2-3 years. Members of the State Chorale typically have significant prior vocal experience and strong music reading skills.

**University Singers** performs a wide variety of repertoire for SATB choir, with a particular focus on modern compositions. Additional emphasis is also placed on the development of choral skills. All singers are welcome, and most singers who are new to NC State first sing in University Singers.

With members drawn from State Chorale and University Singers, members of **Chamber Singers** perform chamber vocal music in small groups, ranging from 4-16 voices, typically with one or two singers on each part.

# The Musicians of the North Carolina Symphony

---

Carlos Miguel Prieto,  
Music Director

*The Maxine and Benjamin  
Swalin Chair*

Grant Llewellyn,  
Music Director Laureate

Sophie Sze-Ki Mok,  
Assistant Conductor  
*The Lucy Moore Ruffin Chair*

## Violin I

Justin Bruns, Concertmaster  
*The Annabelle Lundy Fetterman  
Chair*

Anna Black\*,  
Associate Concertmaster  
*The Assad Meymandi and Family  
Chair*

Karen Strittmatter Galvin,  
Assistant Concertmaster

Rotating,  
Assistant Concertmaster  
*The Anne Heartt Gregory Chair*

Emily Rist Glover  
*The Jessie Wyatt Ethridge Chair*

Paul Goldsberry  
*The Richard and Joy Cook Chair*

Seula Lee  
*The Governor James B. Hunt, Jr.  
Chair*

Joseph Meyer\*

Maria Meyer  
*The Tom and Mary Mac Bradshaw  
Chair*

K. Lee Morris  
*The Harvey At-Large Chair*

Esther Roestan

Jessica Ryou  
*The James C. Byrd and Family Chair*

Pablo Sánchez Pazos\*\*  
*The Phyllis ("Pat") Conrad Wells Chair*

Erin Zehngut  
*The J. Felix Arnold Chair*

## Violin II

Jacqueline Saed Wolborsky,  
Principal  
*The Nancy Finch Wallace Chair*

Tiffany Kang, Associate Principal  
*The Blanche Martin Shaw Chair*

David Kilbride, Assistant Principal  
Qi Cao

Janet Gayer Hall

Chris Jusell

Oskar Ozolinch

Subin Shin

Jeanine Wynton

## Viola

Samuel Gold, Principal  
*The Florence Spinks and Charles  
Jacob Cate and Alma Yondorf and  
Sylvan Hirschberg Chair*

Kurt Tseng, Associate Principal  
*The Betty Ellen Madry Chair*

Brian Sherwood, Assistant Principal  
Petra Berényi

Amy Mason  
*The J. Sidney Kirk Chair*

Daniel Moore

Sandra Schwarcz  
*The Samuel H. and Anne Latham  
Johnson Chair*

To Be Filled

## Cello

Bonnie Thron, Principal  
*The June and Tom Roberg Chair*

Elizabeth Beilman,  
Associate Principal  
*The Sarah Carlyle Herbert Dorroh  
Chair*

Peng Li, Assistant Principal  
*Anonymously Endowed*

Yewon Ahn  
*Anonymously Endowed*

Emma Cary

*The Sara Wilson Hodgkins Chair*

David Meyer  
*The Nell Hirschberg Chair*

Marc Moskovitz\*  
*The William Charles Rankin Chair*

Nathaniel Yaffe  
*The Secretary of Cultural Resources  
Betty Ray McCain Chair*

## Double Bass

Leonid Finkelshteyn, Principal  
*The Martha and Peyton Woodson  
Chair*

Joshua DePoint, Associate Principal  
*The Dr. and Mrs. Preston H. Gada  
Chair*

Bruce Ridge  
*The John C. and Margaret P. Parker  
Chair*

To Be Filled  
*The Harlee H. and Pauline G. Jobe  
Chair*

To Be Filled

## Flute

Megan Torti, Principal  
*The Mr. and Mrs. George M. Stephens  
Chair*

Mary E. Boone, Assistant Principal  
*The Dr. and Mrs. Shaler Stidham, Jr.  
Chair*

Vaynu Kadiyali  
*The Jack and Sing Boddie Chair*

## Piccolo

Vaynu Kadiyali

## Oboe

Melanie Wilsden, Principal  
*The Hardison and Stoltze Chair*

Joseph Peters, Associate Principal  
*The Lizette T. Dunham Chair*

Hoon Chang  
*The Clarence and Alice Aycock Poe Chair*

## English Horn

Joseph Peters  
*The Bruce and Margaret King Chair*

## Clarinet

Samuel Almaguer, Principal  
*The Mr. and Mrs. J. Christopher Walker, II Chair*

Sammy Lesnick, Assistant Principal  
*The Kathryn Powell and Green Flavie Cooper Chair*

## Bassoon

Aaron Apaza, Principal  
*The Mr. and Mrs. Fitzgerald S. Hudson Chair*

Wenmin Zhang, Assistant Principal,  
*The Beethoven Chair*

## French Horn

Rebekah Daley, Principal  
*The Mary T. McCurdy Chair*

Kimberly Van Pelt, Associate Principal  
*The Paul R. Villard and Gabriel Wolf Chair*

Gabriel Mairson  
*The James Marion Poyner Chair*

Russell Rybicki  
*The Mary Susan Kirk Fulghum Chair*

The North Carolina Symphony gratefully acknowledges financial support from Wake County, the City of Raleigh, and the State of North Carolina.



## Trumpet

Paul Randall, Principal  
*The George Smedes Poyner Chair*

Ben Hauser, Associate Principal  
*The Henry and Martha Zaytoun and Family Chair*

## Trombone

Devin Drinan, Principal  
*The Thomas Warwick Steed, Jr. Family Chair*

John Ilika, Assistant Principal  
*The Frances Armour Bryant Chair*

## Bass Trombone

Matthew Neff  
*Anonymously Endowed*

## Tuba

Seth Horner, Principal  
*The Governor and Mrs. James G. Martin, Jr. Chair*

## Timpani

Colin Hartnett, Principal  
*The Patricia R., Steven T. and George F. Hackney III Chair*

## Percussion

Richard Motylinski, Principal  
*The Margery and Earl Johnson, Jr. Chair*

Rajesh Prasad, Assistant Principal  
*The Abram and Frances Pascher Kanof Chair*

## Organ

To Be Filled  
*The Albert and Susan Jenkins and Family Organ Chair*

## Library

Stephanie Wilson, Principal Orchestra Librarian  
*The Mary Colvert and Banks C. Talley Chair*

Taylor Troyer, Assistant Orchestra Librarian

\*Acting position

\*\*Leave of absence

*Named musician chairs are made possible through very meaningful gifts to the Symphony's endowment. As such, these donor families are also members of the Lamar Stringfield Society.*

*All string players rotate stands on a periodic basis in each section with the exception of titled players: Principals, Associate Principals, and Assistant Principals.*

*The North Carolina Symphony is a member of the League of American Orchestras and the International Conference of Symphony and Opera Musicians.*

*The North Carolina Master Chorale is the Resident Chorus of the North Carolina Symphony.*

*The North Carolina Symphony Foundation gratefully acknowledges the generous gift of the Lupot violin from Arnold and Zena† Lerman.*  
†deceased

## NORTH CAROLINA SYMPHONY

You can support over 150,000 North Carolina students this year by donating to the Annual Fund so they can experience *your* Symphony's education programs! Your contribution supports **artistic excellence, statewide service, and music education.**

*Plus, your gift counts towards the 2025/26 State Challenge Grant goal!*

*Scan the QR code, visit [ncsymphony.org/donate](https://ncsymphony.org/donate), or call 919.733.2750. Thank you!*

