



# NORTH CAROLINA SYMPHONY

## From Classical to Broadway

Sat, Jun 28 | 8pm

North Carolina Symphony

David Glover, *conductor*

Andrea Edith Moore, *soprano*

### PROGRAM

Johann Strauss, Jr.

Overture to *Die Fledermaus*

Piotr Ilyich Tchaikovsky

Waltz from *Eugene Onegin*

Giacomo Puccini

"O Mio Babbino Caro"

from *Gianni Schicchi*

Andrea Edith Moore, *soprano*

Giacomo Puccini

Intermezzo from Act III of *Manon Lescaut*

Gioachino Rossini

Overture to *William Tell*

### Intermission

Andrew Lloyd Webber / Arr. Calvin Custer

Selections from *The Phantom of the Opera*

Stephen Schwartz / Orch. John Langley

"The Wizard and I" from *Wicked*

Andrea Edith Moore, *soprano*

Stephen Schwartz / Arr. Ted Ricketts

*Wicked*, Highlights

Frederick Loewe/Alan Jay Lerner

"I Could Have Danced All Night"

from *My Fair Lady*

Andrea Edith Moore, *soprano*

Leonard Bernstein / Arr. Jack Mason

Selections from *West Side Story*

PRESENTING SPONSOR



SERIES SPONSOR



CONCERT SPONSOR



HOSTED BY



PICNIC OF THE WEEK SPONSOR



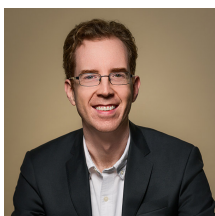
The North Carolina Symphony gratefully acknowledges financial support from Wake County, the City of Raleigh, and the State of North Carolina.



Thank you also to the generous individuals, businesses, foundations, and community partners who support the North Carolina Symphony through contributions each season.

## About the Artists

---



David Glover, *conductor*

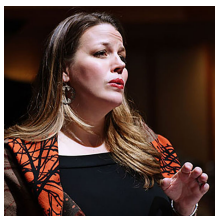
*David Glover served as Associate Conductor of the North Carolina Symphony from 2014-2018 and has frequently returned as a guest conductor for selected Summerfest, Pops, and Education concerts.*

David Glover is currently the Music Director and conductor of the Lynchburg Symphony Orchestra in Virginia, a position he began in 2019. He is also currently the Artistic Director of Triangle Youth Music and the conductor of the Triangle Youth Philharmonic based in Raleigh.

Prior to his position with the North Carolina Symphony, Glover served as the Assistant Conductor of the Indianapolis Symphony Orchestra and as Artistic Director of the Wabash Valley Youth Symphony in West Lafayette, IN. His passion for cultivating a love of classical music in younger generations is evident in both his work with youth orchestras and his creation of a series of successful school-day education shows which have reached over 200,000 elementary school children.

Glover has worked with artists including Stefan Jackiw, Di Wu, Conrad Tao, and Caroline Shaw as well as Pops artists such as Time for Three, Pink Martini, and the Indigo Girls. Glover has guest conducted numerous other orchestras including the Charlotte Symphony Orchestra, Ensemble Orchestral de Paris, South Bend Symphony Orchestra, Muncie (IN) Symphony, and the North Czech Philharmonic.

Glover was awarded the Ansbacher Fellowship to the Salzburg Festival and was an adjunct professor at Indiana University. He holds degrees from the University of Georgia and Boston University in violin performance, and a master's degree in instrumental conducting from Indiana University. He lives in Cary with his wife Emily, a violinist in the North Carolina Symphony, and their daughter Maia.



## Andrea Edith Moore, *soprano*

*Andrea Edith Moore has appeared with the North Carolina Symphony for concerts featuring classical and Broadway music in New Bern, Wilmington, Garner, and at UNC Health Summerfest.*

Soprano Andrea Edith Moore has collaborated with conductors, performing artists, and ensembles including Vladimir Ashkenazy, David Zinman, Eighth Blackbird, Bill T. Jones/Arnie Zane Dance company, the Hamburger Kammeroper, My Brightest Diamond aka Shara Nova, MacArthur Grant winner and tap dancer/choreographer Michelle Dorrance, West African Kora master Diali Cissokho, and the Red Clay Ramblers.

Equally at home in the music of our time and of the distant past, she has starred in roles ranging from The Governess in Britten's *The Turn of the Screw*, Micaëla in Bizet's *Carmen*, Countess Almaviva in Mozart's *Le nozze di Figaro*, and Sara in Jennifer Higdon's *Cold Mountain*. As a concert soloist, she has performed at venues including the Teatro Colón, North Carolina Opera, Baltimore Lieder Weekend, Duke University Chapel, and the Richard Tucker Music Foundation.

Moore's commitment to voices from her native North Carolina has led her to commission, premiere, and perform composers including Kenneth Frazelle, Tarik Ghiradella, Allen Anderson, Robert Ward, and numerous others. She produced, premiered, and developed *Family Secrets: Kith and Kin* with composer Daniel Thomas Davis and recorded this chamber opera on her debut album. She has since released *Searching the Heart*, featuring the work of four living composers, and *Music for Falling and Flying*, featuring the music of composer Nathan Hudson and poet Ben Loory.

Moore is a prizewinner in the Metropolitan Opera National Council Auditions, was a fellow with four-time Grammy-winning ensemble Eighth Blackbird at the Blackbird Creative Lab and has twice received the Yale School of Music Alumni Award. She holds degrees from Yale University, Peabody Conservatory of Music at The Johns Hopkins University, and UNC School of the Arts.

A teacher of voice for over 20 years, she has educated singers at Yale University and served on the voice faculty of UNC Chapel Hill for nearly a decade. She currently lives, sings, and teaches a full-time private studio in Durham. Andrea currently serves as the board chair of Mallarmé Music, now in its 41st season, and is also a co-Artistic Director of Faith & the Arts, the presenting arm of St. Matthew's Episcopal Church in Hillsborough. With her husband, Shannon Healy, she owns the James Beard-nominated craft cocktail bar Alley Twenty Six.

# The Musicians of the North Carolina Symphony

---

Carlos Miguel Prieto,  
Music Director

*The Maxine and Benjamin  
Swalin Chair*

Grant Llewellyn,  
Music Director Laureate

Sophie Sze-Ki Mok,  
Assistant Conductor  
*The Lucy Moore Ruffin Chair*

## Violin I

To Be Filled, Concertmaster  
*The Annabelle Lundy Fetterman  
Chair*

To Be Filled,  
Associate Concertmaster  
*The Assad Meymandi and Family  
Chair*

Anna Black,  
Assistant Concertmaster  
*The Anne Heartt Gregory Chair*

Karen Strittmatter Galvin,  
Assistant Concertmaster

Emily Rist Glover  
*The Jessie Wyatt Ethridge Chair*

Paul Goldsberry  
*The Richard and Joy Cook Chair*

Seula Lee  
*The Governor James B. Hunt, Jr. Chair*

Joseph Meyer\*

Maria Meyer  
*The Tom and Mary Mac Bradshaw  
Chair*

Minjoo Moon\*  
*The Harvey At-Large Chair*

Pablo Sánchez Pazos  
*The Phyllis ("Pat") Conrad Wells Chair*

Jessica Ryou  
*The James C. Byrd and Family Chair*

Erin Zehngut  
*The J. Felix Arnold Chair*

## Violin II

Jacqueline Saed Wolborsky,  
Principal  
*The Nancy Finch Wallace Chair*

Tiffany Kang, Associate Principal  
*The Blanche Martin Shaw Chair*

David Kilbride, Assistant Principal

Qi Cao

Janet Gayer Hall

Chris Jusell

Oskar Ozolinch

Subin Shin

Jeanine Wynton

## Viola

Samuel Gold, Principal  
*The Florence Spinks and Charles  
Jacob Cate and Alma Yondorf and  
Sylvan Hirschberg Chair*

Kurt Tseng, Associate Principal  
*The Betty Ellen Madry Chair*

Brian Sherwood, Assistant Principal

Petra Berényi

Paul Malcolm

Amy Mason  
*The J. Sidney Kirk Chair*

Daniel Moore

Sandra Schwarcz  
*The Samuel H. and Anne Latham  
Johnson Chair*

## Cello

Bonnie Thron, Principal  
*The June and Tom Roberg Chair*

Elizabeth Beilman,  
Associate Principal  
*The Sarah Carlyle Herbert Dorroh  
Chair*

Peng Li, Assistant Principal  
*Anonymously Endowed*

Yewon Ahn\*\*

*Anonymously Endowed*

David Meyer  
*The Nell Hirschberg Chair*

Marc Moskovitz\*  
*The William Charles Rankin Chair*

Samuel Sykes\*

Nathaniel Yaffe  
*The Secretary of Cultural Resources  
Betty Ray McCain Chair*

To Be Filled  
*The Sara Wilson Hodgkins Chair*

## Double Bass

Leonid Finkelshteyn, Principal  
*The Martha and Peyton Woodson  
Chair*

Joshua DePoint, Associate Principal  
*The Dr. and Mrs. Preston H. Gada  
Chair*

Bruce Ridge  
*The John C. and Margaret P. Parker  
Chair*

To Be Filled  
*The Harlee H. and Pauline G. Jobe  
Chair*

To Be Filled  
*The Mar W. McClure Foundation  
Chair*

## Flute

Megan Torti, Principal  
*The Mr. and Mrs. George M. Stephens  
Chair*

Mary E. Boone, Assistant Principal  
*The Dr. and Mrs. Shaler Stidham, Jr.  
Chair*

Alexandra Stokes\*  
*The Jack and Sing Boddie Chair*

## Piccolo

Alexandra Stokes\*  
*The Jean Dunn Williams Chair*

## Oboe

Melanie Wilsden, Principal  
*The Hardison and Stoltze Chair*

Joseph Peters, Associate Principal  
*The Lizette T. Dunham Chair*

To Be Filled  
*The Clarence and Alice Aycock Poe Chair*

## English Horn

Joseph Peters  
*The Bruce and Margaret King Chair*

## Clarinet

Samuel Almaguer, Principal  
*The Mr. and Mrs. J. Christopher Walker, II Chair*

Sammy Lesnick, Assistant Principal  
*The Kathryn Powell and Green Flavie Cooper Chair*

## Bassoon

Aaron Apaza, Principal  
*The Mr. and Mrs. Fitzgerald S. Hudson Chair*

Wenmin Zhang, Assistant Principal,  
*The Beethoven Chair*

## French Horn

Rebekah Daley, Principal  
*The Mary T. McCurdy Chair*

Kimberly Van Pelt, Associate Principal  
*The Paul R. Villard and Gabriel Wolf Chair*

Gabriel Mairson  
*The James Marion Poyner Chair*

Russell Rybicki  
*The Roger Colson and Bobbi Lyon Hackett Chair*

To Be Filled  
*The Mary Susan Kirk Fulghum Chair*

## Trumpet

Paul Randall, Principal  
*The George Smedes Poyner Chair*

Benjamin Hauser, Associate Principal  
*The Henry and Martha Zaytoun and Family Chair*

## Trombone

John Ilika, Principal  
*The Thomas Warwick Steed, Jr. Family Chair*

Steven Osborne\*, Assistant Principal  
*The Frances Armour Bryant Chair*

## Bass Trombone

Matthew Neff  
*Anonymously Endowed*

## Tuba

Seth Horner, Principal  
*The Governor and Mrs. James G. Martin, Jr. Chair*

## Timpani

Colin Hartnett, Principal  
*The Patricia R., Steven T. and George F. Hackney III Chair*

## Percussion

Richard Motylinski, Principal  
*The Margery and Earl Johnson, Jr. Chair*

Rajesh Prasad, Assistant Principal  
*The Abram and Frances Pascher Kanof Chair*

## Organ

To Be Filled  
*The Albert and Susan Jenkins and Family Organ Chair*

## Library

Stephanie Wilson, Principal Orchestra Librarian  
*The Mary Colvert and Banks C. Talley Chair*

Taylor Troyer, Assistant Orchestra Librarian

\*Acting position

\*\*Leave of absence

*Named musician chairs are made possible through very meaningful gifts to the Symphony's endowment. As such, these donor families are also members of the Lamar Stringfield Society.*

*All string players rotate stands on a periodic basis in each section with the exception of titled players: Principals, Associate Principals, and Assistant Principals.*

*The North Carolina Symphony is a member of the League of American Orchestras and the International Conference of Symphony and Opera Musicians.*

*The North Carolina Master Chorale is the Resident Chorus of the North Carolina Symphony.*

*The North Carolina Symphony Foundation gratefully acknowledges the generous gift of the Lupot violin from Arnold and Zena† Lerman.*  
†deceased

## NORTH CAROLINA SYMPHONY

You can support over 150,000 North Carolina students this year by donating to the Annual Fund so they can experience your Symphony's education programs! Your contribution supports **artistic excellence, statewide service, and music education.**

*Plus, your gift counts towards the 2024/25 State Challenge Grant goal!*

*Scan the QR code, visit [ncsymphony.org/donate](https://ncsymphony.org/donate), or call 919.733.2750. Thank you!*

