

SEASON
25
26 UNC HEALTH
PRESENTS
SUMMERFEST
CARY'S KOKA BOOTH
AMPHITHEATRE

NORTH CAROLINA SYMPHONY

Tropical Rock for 5 O'clock... Somewhere

The Music of Jimmy Buffett & More

Sat, Jun 14 | 8pm

North Carolina Symphony
Kevin Fitzgerald, *conductor*
Travis Birch, *vocalist & guitar*
Chris Blem, *vocalist*
Scott Coulter, *vocalist*
Carole J. Bufford, *vocalist*
Shaleah Adkisson, *vocalist*
John Boswell, *vocalist & piano*

Selections will be announced from the stage.

There will be a 15-minute intermission.

PRESENTING SPONSOR



SERIES SPONSOR



CONCERT SPONSOR



CONCERT SUPPORTER



HOSTED BY



PICNIC OF THE WEEK SPONSOR

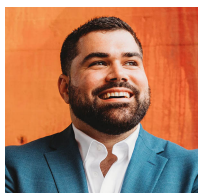


The North Carolina Symphony gratefully acknowledges financial support from Wake County, the City of Raleigh, and the State of North Carolina.



Thank you also to the generous individuals, businesses, foundations, and community partners who support the North Carolina Symphony through contributions each season.

About the Artists



Kevin Fitzgerald, *conductor*

Kevin Fitzgerald previously appeared with the North Carolina Symphony and Cirque de la Symphonie in 2024 at UNC Health Summerfest and in the Pops Series at Raleigh's Meymandi Concert Hall.

American conductor Kevin Fitzgerald won the Special Prize for Best Performance of a Contemporary Piece at The Mahler Competition in 2023—the first conductor to win this award. He has been Associate Conductor of the Jacksonville Symphony since the 2022/23 season, conducting over one hundred performances. He was a Tanglewood Music Center Conducting Fellow in 2021, and he was awarded Career Assistance Grants by the Solti Foundation U.S. for four consecutive years beginning from 2019.

In the 2024/25 season, Fitzgerald conducted subscription concerts with the Oregon Mozart Players and Baton Rouge Symphony Orchestra. He led Handel's *Messiah* with the Jacksonville Symphony, returned as a guest conductor to the Cape Symphony, and had his debut at the Nashville Symphony..



Travis Birch, *vocalist & guitar*

This concert is the North Carolina Symphony debut for Travis Birch.

Travis Birch has been playing guitar and singing professionally since he was 15 years old. With deep roots in Christian and country music, his range and tone allow him to cross into various other genres as well. Residing in Nashville for the past 25 years, Birch has performed at nearly every notable venue, from the bustling streets of Broadway to the intimate setting of The Bluebird Cafe. He has had the privilege of opening for, and sharing stages with, artists like Martina McBride, Merle Haggard, Kenny Chesney, and The Oak Ridge Boys. Birch can be heard leading contemporary praise and worship every Sunday at Hendersonville First United Methodist Church in Tennessee. Outside of his musical career, he cherishes spending time with his wife and twin daughters.



Chris Blem, *vocalist*

This concert is the North Carolina Symphony debut for Chris Blem.

Chris Blem has performed with some of the most prestigious symphonic orchestras. From the Tokyo Philharmonic Orchestra to the San Diego Symphony, Blem has shared the stage with ensembles including the Evergreen Symphony Orchestra (Taipei), Metropolitan Festival Orchestra (Singapore), Buffalo Philharmonic Orchestra, Jacksonville Symphony, Fort Wayne Philharmonic, and Neverland Orchestra (Tokyo). His voice can be heard on three *Disney on Classic* recordings, and he has been featured on Disney Channel Japan in a live broadcast with the Tokyo Philharmonic Orchestra, as well as on Disney+.

On the theatrical stage, Blem's credits include Off-Broadway roles in *A Dog Story* and *Katzelmacher, U.S.A.* Regionally, he has appeared in productions including *Matilda*, *Beauty and the Beast*, *Oklahoma!*, *Hair*, *Show Boat*, *Annie*, *A Christmas Carol*, and *Into the Woods*—for which he earned the League of Cincinnati Theatres Award.

Beyond the stage, Blem is the founder of The Network, a forward-thinking collective of creatives dedicated to developing the unique perspectives of both artists and arts organizations in the digital world and beyond.



Scott Coulter, *vocalist*

This concert is the North Carolina Symphony debut for Scott Coulter.

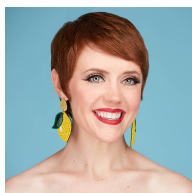
Scott Coulter is one of New York's most honored vocalists (five MAC Awards, five Bistro Awards, and two Nightlife Awards for Outstanding Vocalist).

He's performed at most of NYC's top rooms including Birdland, 54 Below, the Oak Room at the Algonquin, and Feinstein's at Loews Regency—where he spent a record-setting eight months performing the revue *11 O'Clock Numbers at 11 O'Clock* which he also co-created, directed, and musically arranged. His self-titled debut CD won the 2003 MAC Award for Outstanding Recording and was chosen as the best recording of the year by *TheatreMania* and *Cabaret Scenes* magazines. He was director and star of *A Christmas Carol: The Symphonic Concert* in its world premiere with the Baltimore Symphony Orchestra. He's an Emmy nominee for *American Song* and star of the Emmy Award-nominated *A Christmas Carol* (PBS), and appears on the Grammy-nominated *Sondheim Unplugged: The NYC Sessions* (Best Traditional Pop Album).

Coulter regularly performs in concert both as a solo artist and with a variety of performers including Sheena Easton and Academy Award-winning composer Stephen Schwartz. Schwartz has said "One of the greatest things that can happen to a composer is to have his music interpreted by Scott Coulter."

Coulter is creator, arranger, and director of several touring shows for symphonies and performing arts centers as owner/founder of Spot-On Entertainment, including *Music of the Knights*, *The Wonderful Music of Oz*, *Blockbuster Broadway!*, and, for The ASCAP Foundation, *Jerry Herman: The Broadway Legacy Concert*. Along with Michael Kerker and ASCAP, he's a regular producer/director of Michael Feinstein's *Standard Time* at Carnegie Hall. He recently wrote the book for the new musical *Got to Be There*, which celebrates the life and music of songwriter Elliot Willensky, and along with Dave Gaebler, is a co-producer of the Jessica Hendsy/Brianna Barnes musical *Walking with Bubbles* (Drama Desk nominee and Off-Broadway Alliance Award winner.) The show's cast album is produced by Scott Coulter and Vibecke Dahle Dellapolla. Coulter and Gaebler are also on the producing teams of the Broadway musicals *Water for Elephants* and *Suffs* (Tony Awards for Book and Score).

Coulter is founder and owner of Spot-On Entertainment and Spot-On Arts Academy and is a resident director of programming at 54 Below (Broadway's Supper Club) in NYC. He is the Artistic Director of the Pocono Mountains Music Festival and founder of the Pocono Pops! He's a graduate of the University of Cincinnati College-Conservatory of Music, which honored him with the CCM Young Alumni Award (2010) and CCM's Distinguished Service Award (2020).



Carole J. Bufford, *vocalist*

This concert is the North Carolina Symphony debut for Carole J. Bufford.

Carole J. Bufford has become one of the most sought-after performers on the American vintage pop and cabaret scenes. Her shows, including *speak easy* (featuring the Grammy Award-winning Vince Giordano & The Nighthawks), *You Don't Own Me: The Fearless Females of the 1960s*, *Come Together*, and *Vintage Pop*, earned her rave reviews from *The New York Times*, *The Wall Street Journal*, and *The Times* (UK). She currently tours with her solo shows all over the country and in London. She performs regularly with symphony orchestras throughout the country with Spot-On Entertainment. She also hosted the weekly Jazz Party at NYC's Birdland Jazz Club for a highly praised 10-month run. She is the recipient of a BroadwayWorld Award, Bistro Award, and Nightlife Award for Vocalist of the Year. Her show *You Don't Own Me* was named Show of the Year by BroadwayWorld. She is also the recent Gold Medal winner of the American Traditions Vocal Competition.



Shaleah Adkisson, *vocalist*

This concert is the North Carolina Symphony debut for Shaleah Adkisson.

Shaleah Adkisson is a singer and actress who has been delighting audiences across the country for the last 18 years.

She has been seen on Broadway and on tour in *Hair: The American Tribal Love-Rock Musical* and as Joanne in the off-Broadway revival of *Rent*. Other theatrical credits include *Clybourne Park*, *Avenue Q*, *The Hot Mikado*, *Beehive: The '60s Musical*, *Ain't Misbehavin'*, *Grease*, *Nunsense*, and *Children of Eden*.

Since 2013, she has performed around the country with dynamic all-female tribute shows *Back to the Garden* (honoring Joni Mitchell, Carole King, and Laura Nyro) and *August 1969: A Tribute to the Women of Woodstock*.

When not on stage, she works at New York City Center theater in the Education & Community Engagement department managing their in-school theater and dance programs.

She dedicates this performance to her superhero husband, José, and her sweet baby boy, Lucas.



John Boswell, *vocalist & piano*

This concert is the North Carolina Symphony debut for John Boswell.

John Boswell has served as musical director for Judy Collins, Andy Williams, Bob Newhart, Scott Coulter, Maude Maggart, Faith Prince, Carmen Cusack, Babbie Green, Jason Graae, and a host of others. He played the role of “Moose” in the national tour of *Crazy for You* and has appeared on *The Tonight Show*, *Today Show*, *CBS This Morning*, *Regis and Kathie Lee*, and *General Hospital*—and was the piano playing hands of Nancy McKeon on the sitcom *The Facts of Life*.

Recent concerts with symphonies have included *Jerry Herman: The Broadway Legacy Concert*, *Blockbuster Broadway!*, *Sheena Easton and Scott Coulter: The Spy Who Loved Me*, and *Music of the Knights*. He has been heard singing in the shows *Three Men and a Baby...Grand*, *Cinema Toast*, *Broadway Today*, *Wiseguys*, and the New York cult hit *Cashino*. Broadway/Off Broadway credits include *Crazy for You*, *The Secret Garden*, *LIZA! Steppin' Out at Radio City Music Hall*, *Back to Bacharach and David*, and *The Kathy and Mo Show: Parallel Lives*. He has eight CDs of original piano music and a ninth on the way. While a student at UCLA, he received the Frank Sinatra Award for popular instrumentalists.



Scott Coulter's Spot-On Entertainment

Scott Coulter's Spot-On Entertainment is a concert production/booking company based in New York City. Owner and founder Scott Coulter is a multi-award-winning performer, director, musical arranger and producer whose creations for theaters, performing arts centers and symphonies include *Music of the Knights*, *Bette, Babs & Beyond*, *The Wonderful Music of Oz*, *You've Got a Friend*, and *Blockbuster Broadway!* Special composer tribute shows include *Defying Gravity: Stephen Schwartz & Friends* and *Jerry Herman: The Broadway Legacy Concert* (which is co-produced by Spot-On and The ASCAP Foundation). Spot-On concerts often feature an educational component that results in local artists appearing on stage with members of the Spot-On family. It is our goal to inspire and pass the torch to the next generation.

The Musicians of the North Carolina Symphony

Carlos Miguel Prieto,
Music Director

*The Maxine and Benjamin
Swalin Chair*

Grant Llewellyn,
Music Director Laureate

Sophie Sze-Ki Mok,
Assistant Conductor
The Lucy Moore Ruffin Chair

Violin I

To Be Filled, Concertmaster
*The Annabelle Lundy Fetterman
Chair*

To Be Filled,
Associate Concertmaster
*The Assad Meymandi and Family
Chair*

Anna Black,
Assistant Concertmaster
The Anne Heartt Gregory Chair

Karen Strittmatter Galvin,
Assistant Concertmaster

Emily Rist Glover
The Jessie Wyatt Ethridge Chair

Paul Goldsberry
The Richard and Joy Cook Chair

Seula Lee
The Governor James B. Hunt, Jr. Chair

Joseph Meyer*

Maria Meyer
*The Tom and Mary Mac Bradshaw
Chair*

Minjoo Moon*
The Harvey At-Large Chair

Pablo Sánchez Pazos
The Phyllis ("Pat") Conrad Wells Chair

Jessica Ryou
The James C. Byrd and Family Chair

Erin Zehngut
The J. Felix Arnold Chair

Violin II

Jacqueline Saed Wolborsky,
Principal
The Nancy Finch Wallace Chair

Tiffany Kang, Associate Principal
The Blanche Martin Shaw Chair

David Kilbride, Assistant Principal

Qi Cao

Janet Gayer Hall

Chris Jusell

Oskar Ozolinch

Subin Shin

Jeanine Wynton

Viola

Samuel Gold, Principal
*The Florence Spinks and Charles
Jacob Cate and Alma Yondorf and
Sylvan Hirschberg Chair*

Kurt Tseng, Associate Principal
The Betty Ellen Madry Chair

Brian Sherwood, Assistant Principal

Petra Berényi

Paul Malcolm

Amy Mason
The J. Sidney Kirk Chair

Daniel Moore

Sandra Schwarcz
*The Samuel H. and Anne Latham
Johnson Chair*

Cello

Bonnie Thron, Principal
The June and Tom Roberg Chair

Elizabeth Beilman,
Associate Principal
*The Sarah Carlyle Herbert Dorroh
Chair*

Peng Li, Assistant Principal
Anonymously Endowed

Yewon Ahn**
Anonymously Endowed

David Meyer
The Nell Hirschberg Chair

Marc Moskovitz*
The William Charles Rankin Chair

Samuel Sykes*

Nathaniel Yaffe
*The Secretary of Cultural Resources
Betty Ray McCain Chair*

To Be Filled
The Sara Wilson Hodgkins Chair

Double Bass

Leonid Finkelshteyn, Principal
*The Martha and Peyton Woodson
Chair*

Joshua DePoint, Associate Principal
*The Dr. and Mrs. Preston H. Gada
Chair*

Bruce Ridge
*The John C. and Margaret P. Parker
Chair*

To Be Filled
*The Harlee H. and Pauline G. Jobe
Chair*

To Be Filled
*The Mark W. McClure Foundation
Chair*

Flute

Megan Torti, Principal
*The Mr. and Mrs. George M. Stephens
Chair*

Mary E. Boone, Assistant Principal
*The Dr. and Mrs. Shaler Stidham, Jr.
Chair*

Alexandra Stokes*
The Jack and Sing Boddie Chair

Piccolo

Alexandra Stokes*
The Jean Dunn Williams Chair

Oboe

Melanie Wilsden, Principal
The Hardison and Stoltze Chair

Joseph Peters, Associate Principal
The Lizette T. Dunham Chair

To Be Filled
The Clarence and Alice Aycock Poe Chair

English Horn

Joseph Peters
The Bruce and Margaret King Chair

Clarinet

Samuel Almaguer, Principal
The Mr. and Mrs. J. Christopher Walker, II Chair

Sammy Lesnick, Assistant Principal
The Kathryn Powell and Green Flavie Cooper Chair

Bassoon

Aaron Apaza, Principal
The Mr. and Mrs. Fitzgerald S. Hudson Chair

Wenmin Zhang, Assistant Principal,
The Beethoven Chair

French Horn

Rebekah Daley, Principal
The Mary T. McCurdy Chair

Kimberly Van Pelt, Associate Principal
The Paul R. Villard and Gabriel Wolf Chair

Gabriel Mairson
The James Marion Poyner Chair

Russell Rybicki
The Roger Colson and Bobbi Lyon Hackett Chair

To Be Filled
The Mary Susan Kirk Fulghum Chair

Trumpet

Paul Randall, Principal
The George Smedes Poyner Chair

Benjamin Hauser, Associate Principal
The Henry and Martha Zaytoun and Family Chair

Trombone

John Ilika, Principal
The Thomas Warwick Steed, Jr. Family Chair

Steven Osborne*, Assistant Principal
The Frances Armour Bryant Chair

Bass Trombone

Matthew Neff
Anonymously Endowed

Tuba

Seth Horner, Principal
The Governor and Mrs. James G. Martin, Jr. Chair

Timpani

Colin Hartnett, Principal
The Patricia R., Steven T. and George F. Hackney III Chair

Percussion

Richard Motylinski, Principal
The Margery and Earl Johnson, Jr. Chair

Rajesh Prasad, Assistant Principal
The Abram and Frances Pascher Kanof Chair

Organ

To Be Filled
The Albert and Susan Jenkins and Family Organ Chair

Library

Stephanie Wilson, Principal Orchestra Librarian
The Mary Colvert and Banks C. Talley Chair

Taylor Troyer, Assistant Orchestra Librarian

*Acting position

**Leave of absence

Named musician chairs are made possible through very meaningful gifts to the Symphony's endowment. As such, these donor families are also members of the Lamar Stringfield Society.

All string players rotate stands on a periodic basis in each section with the exception of titled players: Principals, Associate Principals, and Assistant Principals.

The North Carolina Symphony is a member of the League of American Orchestras and the International Conference of Symphony and Opera Musicians.

The North Carolina Master Chorale is the Resident Chorus of the North Carolina Symphony.

The North Carolina Symphony Foundation gratefully acknowledges the generous gift of the Lupot violin from Arnold and Zena† Lerman.
†deceased

NORTH CAROLINA SYMPHONY

You can support over 150,000 North Carolina students this year by donating to the Annual Fund so they can experience your Symphony's education programs! Your contribution supports **artistic excellence, statewide service, and music education.**

Plus, your gift counts towards the 2024/25 State Challenge Grant goal!

Scan the QR code, visit ncsymphony.org/donate, or call 919.733.2750. **Thank you!**

