

NORTH CAROLINA **SYMPHONY**

The Music of Queen

FRI, MAR 14, 2025 | 8PM

SAT, MAR 15, 2025 | 3PM & 8PM

MEYMANDI CONCERT HALL, RALEIGH

North Carolina Symphony

Brent Havens, *conductor*

MiG Ayesa, *vocalist*

Dan Clemens, *bass/background vocalist*

Powell Randolph, *drums/background vocalist*

George Cintron, *guitar/background vocalist*

Justin Avery, *keyboards/background vocalist*

PROGRAM

Selections will be announced from the stage.

There will be a 15-minute intermission.

CONCERT SPONSORS



celito

About the Artists

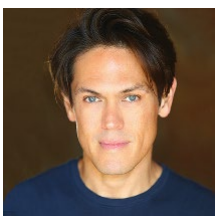


Brent Havens, conductor

Among several previous appearances, Brent Havens conducted the North Carolina Symphony in a tribute to the music of Pink Floyd in 2019.

Trained at the Berklee College of Music, arranger and conductor Brent Havens has written music for orchestras, feature films, and virtually every kind of television. His work includes movies for television networks such as ABC, CBS, and ABC Family; commercials; sports music for networks such as ESPN; and even cartoons. He has worked with the Royal Philharmonic Orchestra and BBC Concert Orchestra in London as well as the Malaysian Philharmonic, Minnesota Orchestra, Nashville and Houston symphonies, Buffalo Philharmonic Orchestra, and countless others—including the symphony orchestras of Cincinnati, Pittsburgh, Indianapolis, Atlanta, and Dallas.

Havens is arranger and guest conductor for symphonic rock programs including *The Music of Led Zeppelin*, *The Music of The Def Leppard*, *The Music of Journey*, *The Music of Michael Jackson*, *The Music of Pink Floyd*, *The Music of Whitney Houston*, *The Music of the Rolling Stones*, and *The Music of the Moody Blues*.



MiG Ayesa, vocalist

*In 2022, MiG Ayesa appeared in *The Music of Queen with the North Carolina Symphony at Summerfest*.*

MiG Ayesa started his career in Australia in *Buddy: The Buddy Holly Story*. He was then chosen to join the London cast. Other West End credits include *We Will Rock You*, *Rent*, *Thriller Live*, and *Seasons of Larson*.

Broadway credits include *Burn the Floor* and *Rock of Ages*, which he also joined on the first U.S. national tour and in the Philippines. In Australia, his credits include *Grease*, *Cinderella*, *Aladdin*, *West Side Story*, *Rent*, *Fame*, *The Music of Andrew Lloyd Webber*, and a U.K. and Australian Tour of *The Music of Queen: Rock and Symphonic Spectacular*. He reprised the role of “Galileo Figaro” for the 10th Anniversary World Arena Tour of *We Will Rock You* and appeared as one of the “Tenors of Rock” at their resident headline show in Las Vegas and on the high seas.

Ayesa starred as “Joe King” in the Australian TV series *The Ferals* and was a finalist in the global TV show *Rockstar: INXS*. Film credits include *Queen of the Damned* and *Subterano*. He has released two albums, *MiG* and *More Than Ever*.

The Musicians of the North Carolina Symphony

Carlos Miguel Prieto,
Music Director
*The Maxine and
Benjamin Swalin
Chair*

Grant Llewellyn,
Music Director Laureate

Sophie Sze-Ki Mok,
Assistant Conductor
The Lucy Moore Ruffin Chair

Violin I

To Be Filled, Concertmaster
The Annabelle Lundy Fetterman Chair

To Be Filled,
Associate Concertmaster
The Assad Meymandi and Family Chair

Anna Black,
Assistant Concertmaster
The Anne Heartt Gregory Chair

Karen Strittmatter Galvin, Assistant
Concertmaster

Emily Rist Glover
The Jessie Wyatt Ethridge Chair

Paul Goldsberry
The Richard and Joy Cook Chair

Seula Lee
The Governor James B. Hunt, Jr. Chair

Joseph Meyer*

Maria Meyer
The Tom and Mary Mac Bradshaw Chair

Minjoo Moon*
The Harvey At-Large Chair

Pablo Sánchez Pazos
The Phyllis ("Pat") Conrad Wells Chair

Jessica Ryou
The James C. Byrd and Family Chair

Erin Zehngut
The J. Felix Arnold Chair

*The North Carolina Symphony
Foundation gratefully
acknowledges the generous gift
of the Lupot violin from Arnold
and Zena† Lerman.
†deceased*

Violin II

Jacqueline Saed Wolborsky,
Principal
The Nancy Finch Wallace Chair

Tiffany Kang,
Associate Principal
The Blanche Martin Shaw Chair

David Kilbride,
Assistant Principal

Qi Cao

Janet Gayer Hall

Chris Jusell

Oskar Ozolinch

Subin Shin

Jeanine Wynton

Viola

Samuel Gold, Principal
*The Florence Spinks and Charles
Jacob Cate and Alma Yondorf
and Sylvan Hirschberg Chair*

Kurt Tseng,
Associate Principal
The Betty Ellen Madry Chair

Brian Sherwood,
Assistant Principal

Petra Berényi

Paul Malcolm

Amy Mason
The J. Sidney Kirk Chair

Daniel Moore

Sandra Schwarcz
*The Samuel H. and Anne Latham
Johnson Chair*

Cello

Bonnie Thron, Principal
The June and Tom Roberg Chair

Elizabeth Beilman,
Associate Principal
*The Sarah Carlyle Herbert Dorroh
Chair*

Peng Li, Assistant Principal,
Anonymously Endowed

Yewon Ahn**
Anonymously Endowed

David Meyer
The Nell Hirschberg Chair

Marc Moskowitz*
*The William Charles Rankin
Chair*

Lisa Howard Shaughnessy
The Sara Wilson Hodgkins Chair

Samuel Sykes*

Nathaniel Yaffe
*The Secretary of Cultural
Resources Betty Ray McCain
Chair*

Double Bass

Leonid Finkelshteyn, Principal
*The Martha and Peyton
Woodson Chair*

Joshua DePoint,
Associate Principal
*The Dr. and Mrs. Preston H. Gada
Chair*

Craig Brown
*The Mark W. McClure Foundation
Chair*

Erik Dyke
*The Harlee H. and Pauline G.
Jobe Chair*

Bruce Ridge
*The John C. and Margaret P.
Parker Chair*

Flute

Megan Torti, Principal
*The Mr. and Mrs. George M.
Stephens Chair*

Mary E. Boone,
Assistant Principal
*The Dr. and Mrs. Shaler Stidham,
Jr. Chair*

Alexandra Stokes*
The Jack and Sing Boddie Chair

Piccolo

Alexandra Stokes*
The Jean Dunn Williams Chair

Oboe

Melanie Wilsden, Principal
The Hardison and Stoltze Chair

Joseph Peters,
Associate Principal,
The Lizette T. Dunham Chair

To Be Filled
*The Clarence and Alice Aycock
Poe Chair*

English Horn

Joseph Peters
*The Bruce and Margaret King
Chair*

Clarinet

Samuel Almaguer, Principal
*The Mr. and Mrs. J. Christopher
Walker, II Chair*

Sammy Lesnick,
Assistant Principal
*The Kathryn Powell and Green
Flavie Cooper Chair*

Bassoon

Aaron Apaza, Principal
*The Mr. and Mrs. Fitzgerald S.
Hudson Chair*

Wenmin Zhang,
Assistant Principal,
The Beethoven Chair

French Horn

Rebekah Daley, Principal
The Mary T. McCurdy Chair

Kimberly Van Pelt,
Associate Principal
*The Paul R. Villard and Gabriel
Wolf Chair*

Gabriel Mairson
The James Marion Poyner Chair

Russell Rybicki
*The Roger Colson and
Bobbi Lyon Hackett Chair*

To Be Filled
*The Mary Susan Kirk Fulghum
Chair*

Trumpet

Paul Randall, Principal
The George Smedes Poyner Chair

Ben Hauser,
Associate Principal
*The Henry and Martha Zaytoun
and Family Chair*

Trombone

John Ilika, Principal
*The Thomas Warwick Steed, Jr.
Family Chair*

Steven Osborne*,
Assistant Principal
The Frances Armour Bryant Chair

Bass Trombone

Matthew Neff
Anonymously Endowed

Tuba

Seth Horner, Principal
*The Governor and Mrs. James G.
Martin, Jr. Chair*

Timpani

Colin Hartnett, Principal
*The Patricia R., Steven T. and
George F. Hackney III Chair*

Percussion

Richard Motylinski, Principal
*The Margery and Earl Johnson,
Jr. Chair*

Rajesh Prasad,
Assistant Principal
*The Abram and Frances Pascher
Kanof Chair*

Organ

To Be Filled
*The Albert and Susan Jenkins
and Family Organ Chair*

Library

Stephanie Wilson,
Principal Orchestra Librarian
*The Mary Colvert and Banks C.
Talley Chair*

Taylor Troyer,
Assistant Orchestra Librarian

*Acting position

**Leave of absence

*Named musician chairs
are made possible through
very meaningful gifts to the
Symphony's endowment. As
such, these donor families are
also members of the Lamar
Stringfield Society.*

*All string players rotate stands on
a periodic basis in each section
with the exception of titled
players: Principals, Associate
Principals, and Assistant
Principals.*

*The North Carolina Symphony
is a member of the League of
American Orchestras and the
International Conference of
Symphony and Opera Musicians.*

*The North Carolina Master
Chorale is the Resident Chorus of
the North Carolina Symphony.*

**Thank you to the generous individuals, businesses, foundations, and
community partners who support the North Carolina Symphony each year.**

The North Carolina Symphony gratefully
acknowledges financial support from
Wake County, the City of Raleigh,
and the State of North Carolina.



NORTH CAROLINA SYMPHONY

You can support over 150,000
North Carolina students this
year by donating to the Annual
Fund so they can experience *your*
Symphony's education programs!
Your contribution supports **artistic
excellence, statewide service, and
music education.**

*Plus, your gift counts towards the
2024/25 State Challenge Grant goal!*

Scan the QR code, visit
ncsymphony.org/donate,
or call 919.733.2750. **Thank you!**

